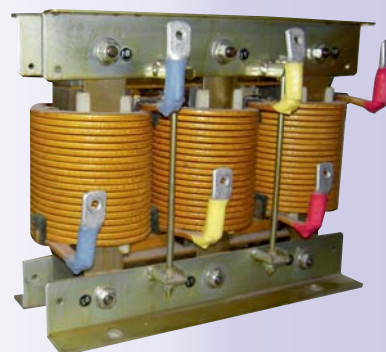


HARMONIC BLOCK REACTORS

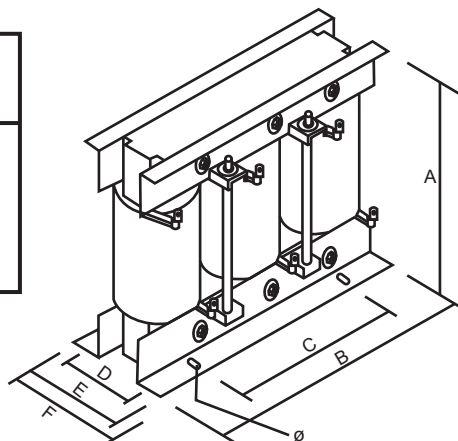
Technical Specifications

Standard Voltage (Un)	: 440V to 690V
Rated Voltage	: 3 x 415V
Rated (KVAR)	: 12.5, 25, 50 & 100
Frequency	: 50 Hz
Constructional Max. Voltage	: 1000 V
Test Voltage	: 3000 V
Filtering factors / Tuning Freq.	: 5.67%, 210Hz, 7%, 189 Hz 14%, 134 Hz
Tolerance of inductance	: $\pm 3\%$
Linearity ($L > 0.95 \times L_n$)	: 200%
Ambient temperature	: + 55°C
Insulation class	: H
Cooling method	: Natural cooling (AN)
Installation	: Indoor
Protection degree	: IP 00
Operating altitude	: 1000m above sea level at rated operation
Temp. sensor (normally closed)	: 155°C
Reference standard	: IEC 61558-2-20



	KVAR Rating	A	B	C	D	E	F	Ø
7%	12.5	225	260	180	86	115	150	10x15
	25	258	290	215	100	120	170	10x13
	50	303	340	272	102	136	190	10x16
	100	340	400	272	118	160	220	13x18

- Specifications are subject to change without notice.
- For exact mounting dimension contact our Sales Office.
- Other rating and filtering factors are available on request.



Design Features

Neptune filter circuit are designed as three-phase reactors with an iron core and air gap. Harmonic Filter Reactors are made out of highest quality material and very stringent quality control. It has been designed with properties like low temperature rise and lower flux density so that it can operate in worst conditions of ambient and harmonic overloads. They offer very good degree of linearity. Cheaper and non-linear reactors may trigger undesirable chain phenomena during periods of operation with high harmonic values, such as reducing in the inductance with consequent increase in the resonance frequency of the LC group, which would drain off more harmonic current, further reducing its inductance and overload the reactor more and more. Reactors are available with filtering factor of 7% and 14% in 12.5, 25, 50 and 100 KVAR rating. Any other filtering factor and rating can be made on request.

Network Analysis by:



E-mail : info@naacenergy.com



Sales & Marketing Office :

NEPTUNE SYSTEMS PVT. LTD.

A-11, Sec.-59, Noida-201301 (UP) (INDIA)

Tel: 0120-3069000, 3069040, 3069042

Fax: 0120-3069041

E-mail: enquiry@neptuneindia.com

Web: www.neptuneindia.com